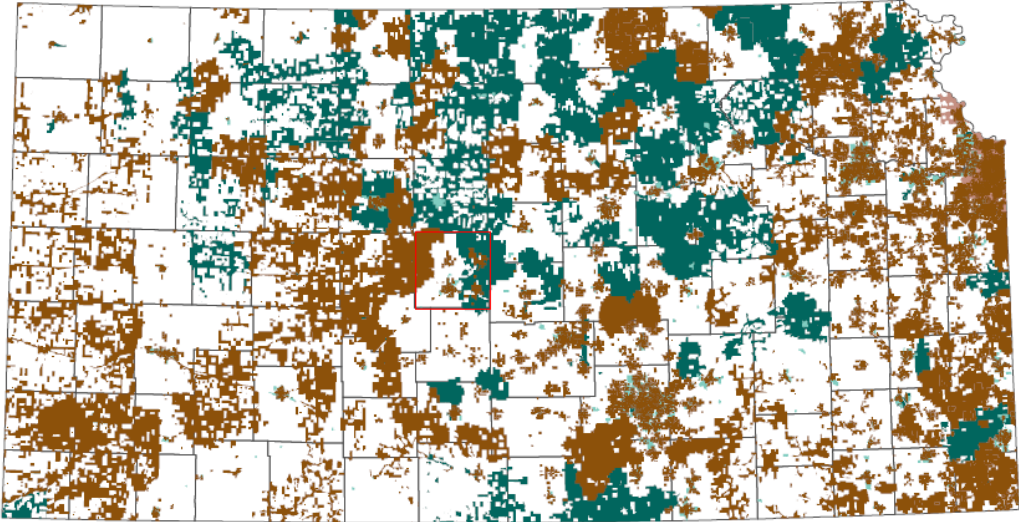




Broadband Availability in Kansas, 2014



Source: Institute for Policy & Social Research, The University of Kansas; data from U.S. Department of Commerce, National Telecommunications and Information Administration, State Broadband Initiative (June 30, 2014).

Technology Type

- Asymmetric xDSL
- Symmetric xDSL
- Other Copper Wire
- Cable Modem
- Optical Carrier/Fiber