

JOHNSONGRASS CONTROL

MECHANICAL:

Mow every two weeks during the growing season, deep cultivation exposing roots and crop rotation.

HERBICIDES:

2 – 8 oz Oust per acre

1 – 3 qts Glyphosate per acre

2 ½ - 6 pts MSMA per acre

8 – 12 oz Plateau per acre

32 oz Journey per acre

5 – 8 oz Assure under 10 inches/10 – 12 oz over 10 inches

¾ - 2 oz Outrider per acre

CORN:

Accent .67 oz per acre

Eradicane 4 – 7 ½ pt per acre

.76 oz Beacon per acre

¾ - 1 pt Trifluralin per acre

SOYBEANS:

6 – 12 oz Fusilade per acre

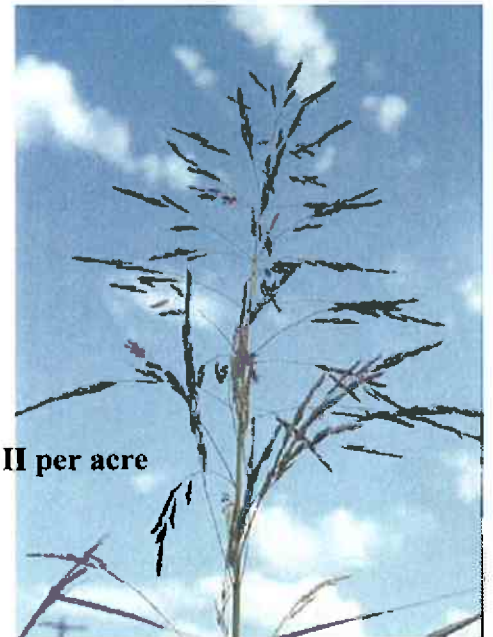
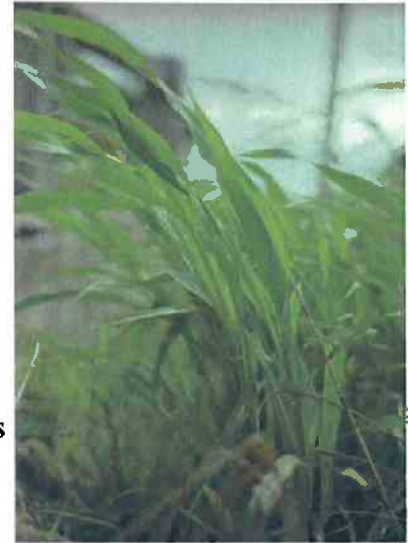
18 oz Assure per acre maximum // 5 – 12 oz Assure II per acre

4 – 16 oz Select per acre

2 ½ pts Poast per acre maximum

Glyphosate if Round Up Ready beans

1 – 2 pts Trifluralin per acre incorporated



*Rates may vary by region. Always read and follow label directions. Consult your local weed director for additional information.